

★ *3 Speeds and Reverse*  
 ★ *Automatic Clutch*  
 ★ *Instant Tool Change*  
 ★ *Adjustable Track*  
 ★ *Power Steering*  
 ★ *Power Take off*

NO OTHER two-wheel tractor offers these six star features without extra cost:—

**The finest tractor on two wheels.**



**The British Anzani 6 H.P. "Iron Horse".**

**LOW ALL-IN COST WITH COMPLETE EQUIPMENT.**

Price of Tractor on Steel Wheels, £130 ex works  
 (on Pneumatic Wheels £10 extra)  
 Ploughing Attachments Complete £14. Tool Carriage Complete £14

1. In ploughing with a "walking tractor" 3. What is the purpose of high ground-clearance?  
 2. Why are three forward speeds necessary? 4. Why is an adjustable track necessary?  
 5. What is the advantage of an independently steerable toolbar?  
 Know the answers before you buy.

**TWO-WHEEL TRACTOR QUIZ**

**What the British Anzani IRON HORSE TRACTOR will do**

**APRIL**  
**PLOUGHING.** General Purpose or Digger Type Ploughs are available. These are specially designed to follow easily and either type will accomplish work at least equal to two horses under normal conditions.

wheels are adjustable for width and height. A convenient hand control allows lateral movement of the tool bar without interfering with the steering of the tractor, while a ratchet type depth control enables the tool bar to be raised at the end of each row and lowered to required depth after turning round. Spring Harrow tines, Cultivating Points, Hoeing Blades, etc. are supplied as required, together with Standards to suit. Six clamps are included with tool bar, also permanent haulage coupling.

Adjustment is provided for furrow width and a crank handle near the operator allows the depth to be regulated while working. When traversing the headland the plough can be run on its heel, thus relieving the operator of all strain. The height of the Tractor handles is also adjustable.

**POWER STEERING.** This feature with its finger-tip control enables the operator to pivot the tractor at the end of each row without effort. It gives all the advantages of a differential without the risk of wheel spin.

The reverse gear is an enormous advantage for turning the Tractor at the end of each furrow or in confined spaces. When in reverse the Plough is automatically lifted clear of the ground.

**POWER TAKE OFF.** This is very accessible and may be used for all belt work, including crop sprayer, concrete mixer, saw grinder, pump, generator, or blower. The engine governor automatically maintains a constant speed irrespective of load.

Extension Rims are available for exceedingly difficult conditions. These make a total wheel width of 8"

**HAULAGE.** In addition to hauling mowers, hay turners, etc., the IRON HORSE will pull our special riding carriage which may be used with most attachments except ploughs, enabling the operator to ride while working. Farm Carts, etc. with loads up to 1 ton can be handled under reasonable conditions; also watering carts. These will need special drawbar attachment and handle support. Road bands are available for use with steel wheels.

**HARROWING.** Drag Harrow may be attached to rear of Tool Frame by a short length of chain. We manufacture a special Disc Harrow attachment consisting of ten 16" diameter discs arranged in two adjustable sets of five.

**CULTIVATING.** The BRITISH ANZANI Tool Carriage incorporates features never previously attempted in a unit of this type. It forms the basis of all operations which follow ploughing. Exceptional ground clearance is provided to straddle growing crops. The depth

FROM THE SAME STABLE—THE FAMOUS 1-H.P. MOTOR HOE

Manufacturers and Patentees:  
**THE BRITISH ANZANI ENGINEERING CO. LTD**  
 WINDMILL ROAD, HAMPTON HILL, MIDDLESEX.  
 Telephone: MOLESEY 2690



Ploughing



Cultivating



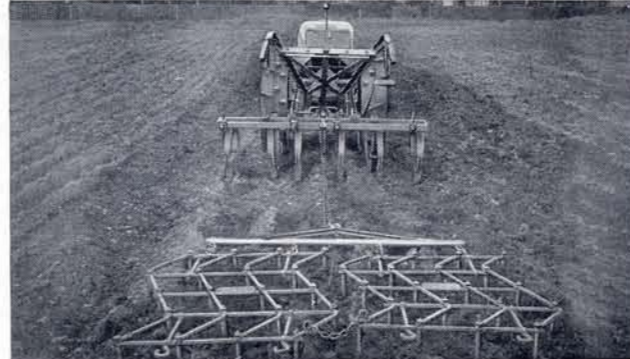
Three Row Seeding



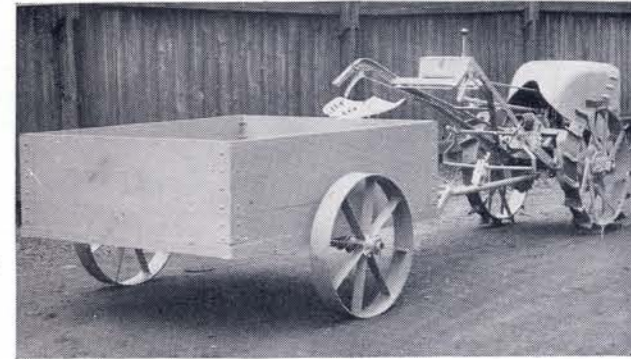
Potato Lifting



Disc Harrowing



Spring Tine and Zig-Zag Harrowing



Carting by Trailer

## SPECIFICATION

**ENGINE.** 6 h.p. ANZANI-J.A.P. 4 Cycle Petrol Model, air cooled with fan and cowl. Handle starting; 2,000 r.p.m. Impulse starting magneto. Consumption: 2 gallons per day under normal conditions.

**CLUTCH.** Special Centrifugal type. Engages automatically when throttle is opened, thus eliminating the clutch lever.

**TRANSMISSION.** Three speed and reverse Synchronesh gear box with remote control, worm reduction gear and enclosed heavy duty 1" pitch chain final drive. Standard top gear speed 4½ m.p.h.

**BELT PULLEY.** 3½" dia. x 3" wide for auxiliary power take off.

**SPEED RANGE.** From ¼ to 4½ m.p.h. Governor control at handles.

**POWER STEERING.** By means of differential action dog clutches controlled from handles (patented feature).

**STEEL WHEELS.** 30" dia. x 4" face width fitted with cleats to give adequate wheel grip.

**PNEUMATIC WHEELS.** 34" dia. x 6" section with extra heavy traction tread.

**ADJUSTABLE TRACK.** Wheel centres can be set at any width between 24" and 36". 15" ground clearance.

**WEATHER PROTECTION.** The entire power unit is enclosed by a fully streamlined cover which may be raised to allow instant accessibility to all mechanism, a stay being provided to hold it in the raised position.

**TOOL BOX.** Containing all necessary spanners, grease gun, instruction book, etc.

**FINISH** Two coats of enamel over special primer.

**OVERALL SIZE.** Length 8' 6", width 3' 2", height 3' 8".

**WEIGHT.** 8 cwt.

**TOOL ATTACHMENTS.** A complete range of specially designed, reasonably priced tools is available. See separate list. Special quick action coupling.

**DESIGN & MANUFACTURE.** 100% BRITISH. No less than 10 ball and roller bearings are incorporated in the construction. The gears are of special high duty steel suitably hardened. An oil bath type air cleaner is fitted to the carburetter. This machine is a new conception of Lightweight Tractor design and is covered by our comprehensive guarantee.

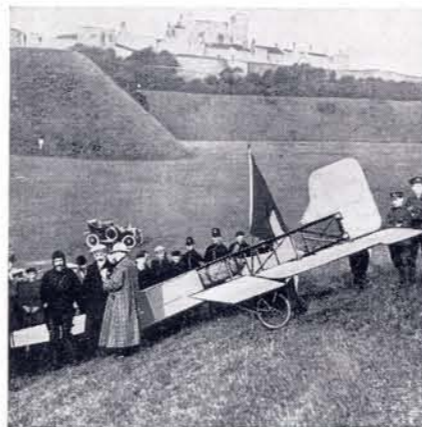
**EASY PAYMENT** terms available.

★

The patent quick action coupling enables all implements to be fitted or changed in a few minutes, without the use of spanners.

## PROOF OF LEADERSHIP

We feel that a few details of this Company's outstanding achievements in the field of engineering will not be out of place. The experience gained during many years of sound progress provides a solid basis and is reflected in the many



thousands of satisfied Iron Horse users at home and abroad. Machines more than eight years old are still giving every satisfaction in service.

The first aeroplane to fly the Channel successfully was fitted with an Anzani engine (Bleriot, 1909).



Charles H. Harrison, A.M.I.M.E., our Managing Director, winner of numerous important motor boat races and World records breaker.

During the war, more than one million vital components were manufactured to Ministry of Aircraft Production standards and our engines were used by all the fighting services.

★

This background of successful design and quality workmanship is your guarantee of satisfaction.



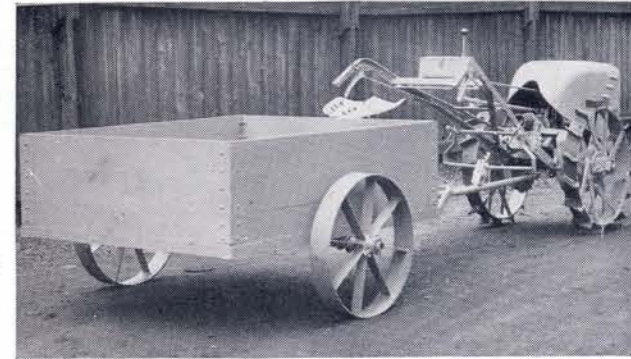
Power Take-off driving Saw



Triple Gang Mower



Harvesting



Carting by Trailer